

PRINTERS and PRINTING

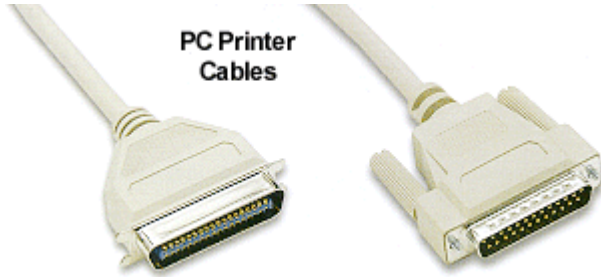
FROM THE DESK OF PAMELA TABAK



All-in-One



Simple Printer



PC Printer Cables



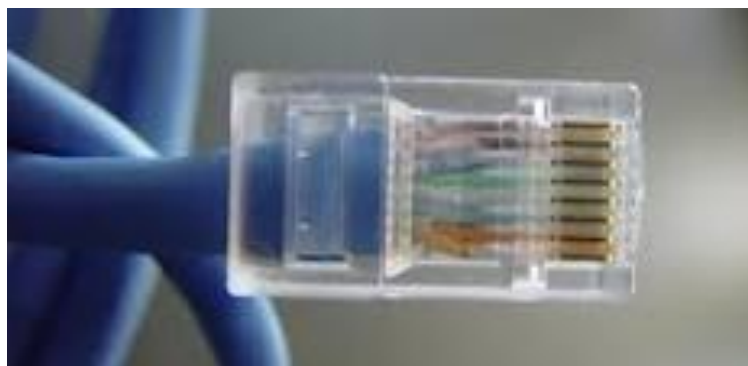
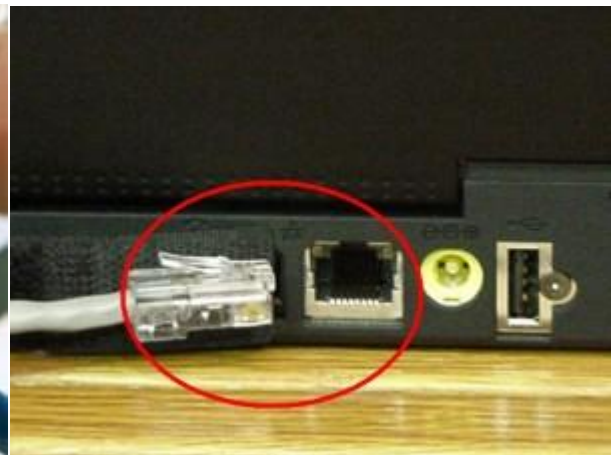
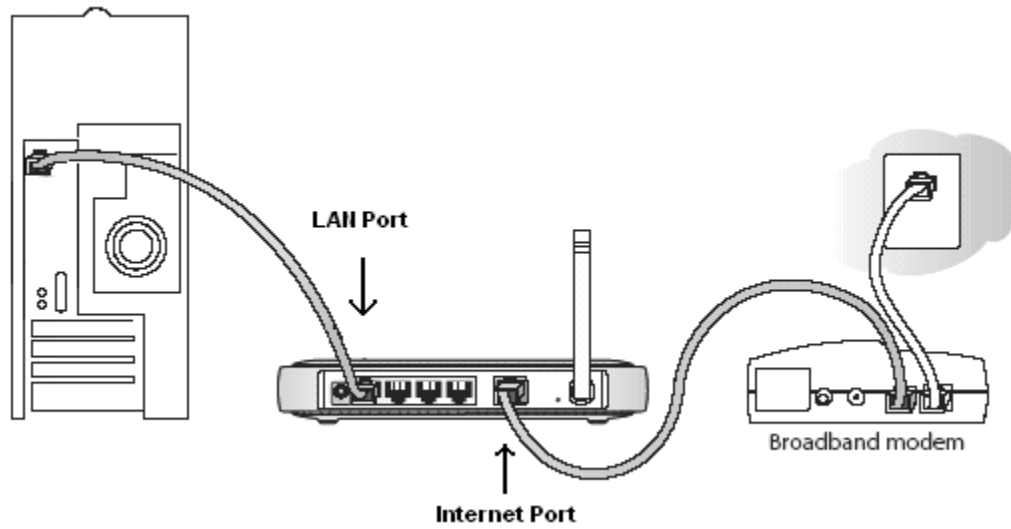
Parallel



USB



Wireless Connection Using Ethernet Cable



Eleven Biggest Printer Problems

Problem 1: Printing is too slow.

Solution: Increase the performance and save ink by reducing print quality for everyday output or print in **Grayscale**.

Printer settings vary by model but switching to draft-printing mode will fix the problem.

1. Select Print then Properties
2. Click on **Draft or Fast Draft Mode** print quality.



Problem 2: Ink or toner cost too much.

Solution: Save ink by working in Draft Mode which uses less ink or toner.

If you have a **Laser machine** it will be more economical.

One cost-saving solution is to buy **higher-capacity cartridges**.

If you print a great deal, try an ink cartridge with a 250-plus page yield, or a toner cartridge with a 2,000-plus page yield.

I cannot recommend using third party remanufactured or refilled ink cartridges.

Some low quality inks can clog or damage your printer and they usually turn out to be less economical.



Problem 3: Windows is sending print jobs to the wrong printer.

Solution: This sometimes happens when you have more than one printer installed.

Make sure that you set the printer that you wish to use as the **Default Printer**.

~ ~ ~ ~ ~ ~ ~ ~ ~ ~ ~ ~ ~ ~ ~ ~ ~ ~

Problem 4: Printing pictures are too light, too spotty, or have horizontal lines.

Solution: If you do not use your ink printer very often the print heads can become clogged or dried out. Your printer's **utility program** may be able to clean out the dried ink. Make sure to check a test page to ensure the quality of the next print job.

Problem 5: Receiving an “empty ink cartridge” notice.

Solution: Printer “out-of-ink” messages are notoriously unreliable. They usually appear way before the ink has depleted.

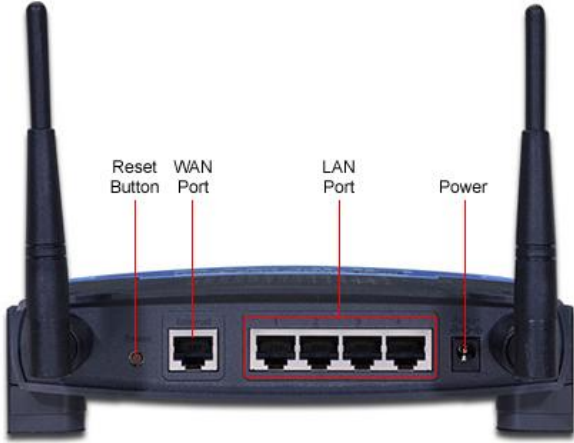
Nevertheless, this is a good time to purchase a new cartridge so that you are able to resume your work without interruption when the old cartridge runs out. Just leave the old cartridge in the printer until it prints no more. Then replace it with the new one.





Problem 6: My wireless printer is too slow.

Solution: To get the best performance from a network printer it's better to connect with hard wired, Ethernet-cable-to-router connection. Wireless printing may be more convenient in many homes and offices, but it has its limitations. Since Wi-Fi speeds slow down with distance, you'll want to place your wireless printer as close as possible to the router.



Problem 7: Using remanufactured or refilled ink cartridges.

Solution: I recommend sticking with the manufacturer's ink even if they cost more. The ink quality, saturation and drying time is unsurpassed and you will always have a professional looking document if your settings are correct.

Third-party products may save you money up front but cheaper inks produce lower-quality prints.

Test Centers have found that some cartridges leave more than 40 percent of their ink unused. The worst offenders are third-party brands.



Problem 8: Save paper and trees by fitting more text on one page.



Solution: Shrinking text to fit two pages on one sheet saves money because you'll buy less paper and speed up printing.



Problem 9: Your printer does not print.

Solution:

- (a) If the printer is attached to a power bar make sure that it is turned on.
- (b) Then check that the correct printer is selected. If not, click the “down arrow” to select the printer that is connected to your computer.
- (c) Make sure that there are no documents in the “print queue” waiting to be printed. If you find a list of documents waiting to be printed clear the “printer queue” and resume printing.

- (d) Check the printer utilities and find out if you are out of ink or toner.
- (e) Many of the new printers have memory capacity; especially the All-in-One models. If the printer refuses to print the printer memory may be full. Turn the printer off and then on again to clear the memory.

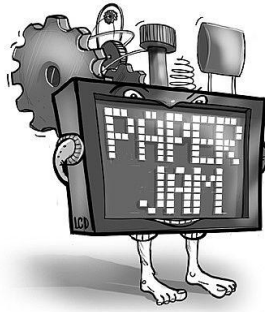


Problem 10: The printer keeps printing.



Solution: This is caused by giving the “print” command too many times which creates a list of documents in the “printer queue.”

Right click on the Printer icon near your clock and close it. Then delete the documents in the Printer Queue.



Problem 11: Paper is caught – Printer Jam

Solution: Make sure you have about an inch of paper in your printer tray at all times.

Before loading the paper, make sure that all the edges are even and straight.

With most printers the paper should be pulled from the back of the printer if there is a “paper jam.” Pulling it from the front might damage the mechanism that guides the paper through the printer.





My Recommendation: Always have the printer manual or online printer manual handy to check the manufacturer's recommendations.

If you need more help please [contact me](#) and I will send you a detailed tutorial to fix the problem within 24 hours if not at once.

